



GMT MONTHLY MEMBERSHIP PROGRESS REPORT

Results as of: 12/31/2019

Multiple District 17

LOCATION: KANSAS

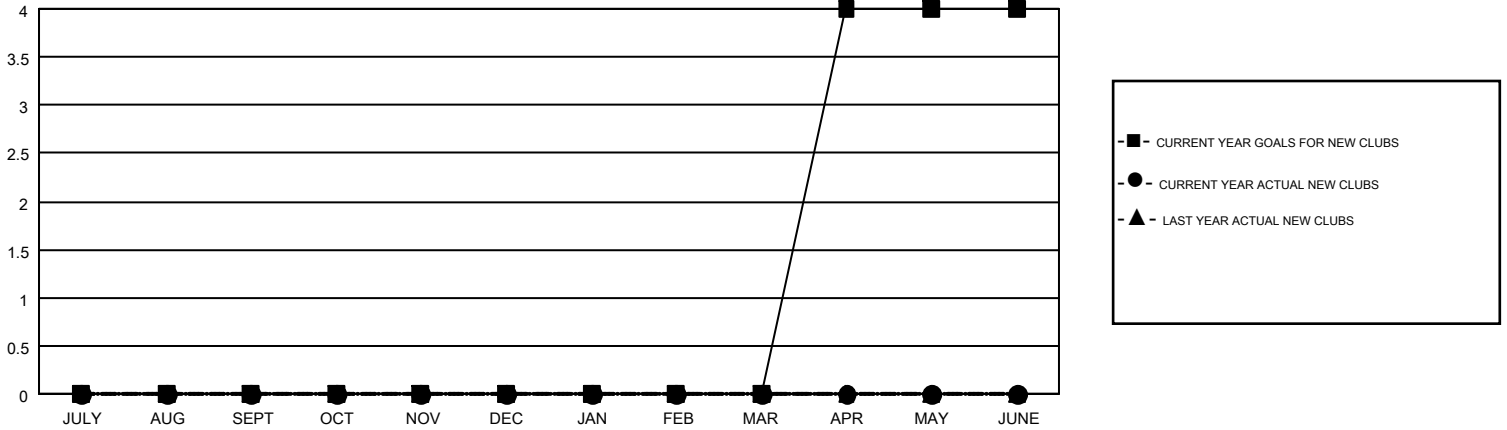
GMT: OPEN

GMT CA 1

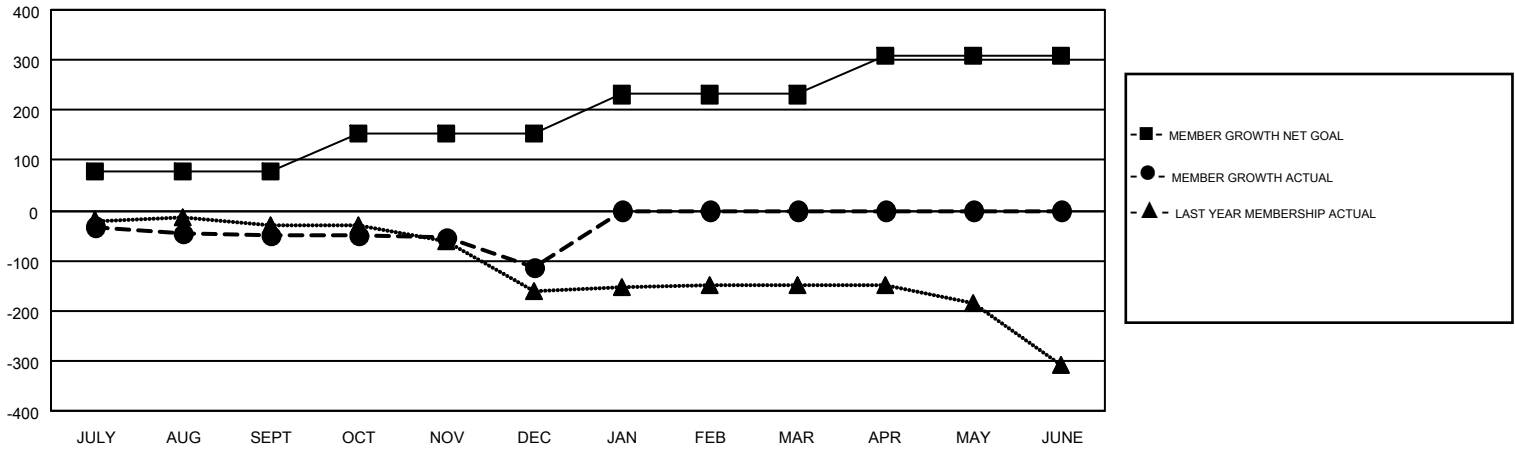
Clubs			
RESULTS FOR 2019-2020			
QUARTER	NEW CLUB GOAL	NEW CLUBS	DROPPED CLUBS
JULY/AUG/SEPT	0	0	2
OCT/NOV/DEC	0	0	2
JAN/FEB/MAR	0	0	0
APR/MAY/JUNE	4	0	0

Members			
RESULTS FOR 2019-2020			
QUARTER	MEMBER GROWTH NET GOAL	MEMBER GROWTH ACTUAL	DROPPED MEMBERS ACTUAL (including transfers)
JULY/AUG/SEPT	76	65	102
OCT/NOV/DEC	77	80	134
JAN/FEB/MAR	78	0	0
APR/MAY/JUNE	79	0	0

GOALS AND ACTUAL NEW CLUBS CUMULATIVE



GOALS AND ACTUAL MEMBERS CUMULATIVE



DROPPED CLUBS: 4	68 CLUBS OF 228 ADDED 1 OR MORE NEW MEMBERS	<u>GENDER DISTRIBUTION</u>
		MALE 3,221 (70.65%)
		FEMALE 1,338 (29.35%)
<u>DROPPED MEMBERS</u>	CLICK HERE FOR CUMULATIVE MEMBERSHIP DATA	TOTAL FAMILY UNIT MEMBERS 962
DECEASED 27		FAMILY MEMBERS PAYING HALF DUES 489
CLUB CANCELLED 10		
OTHER 199		
TOTAL 236		